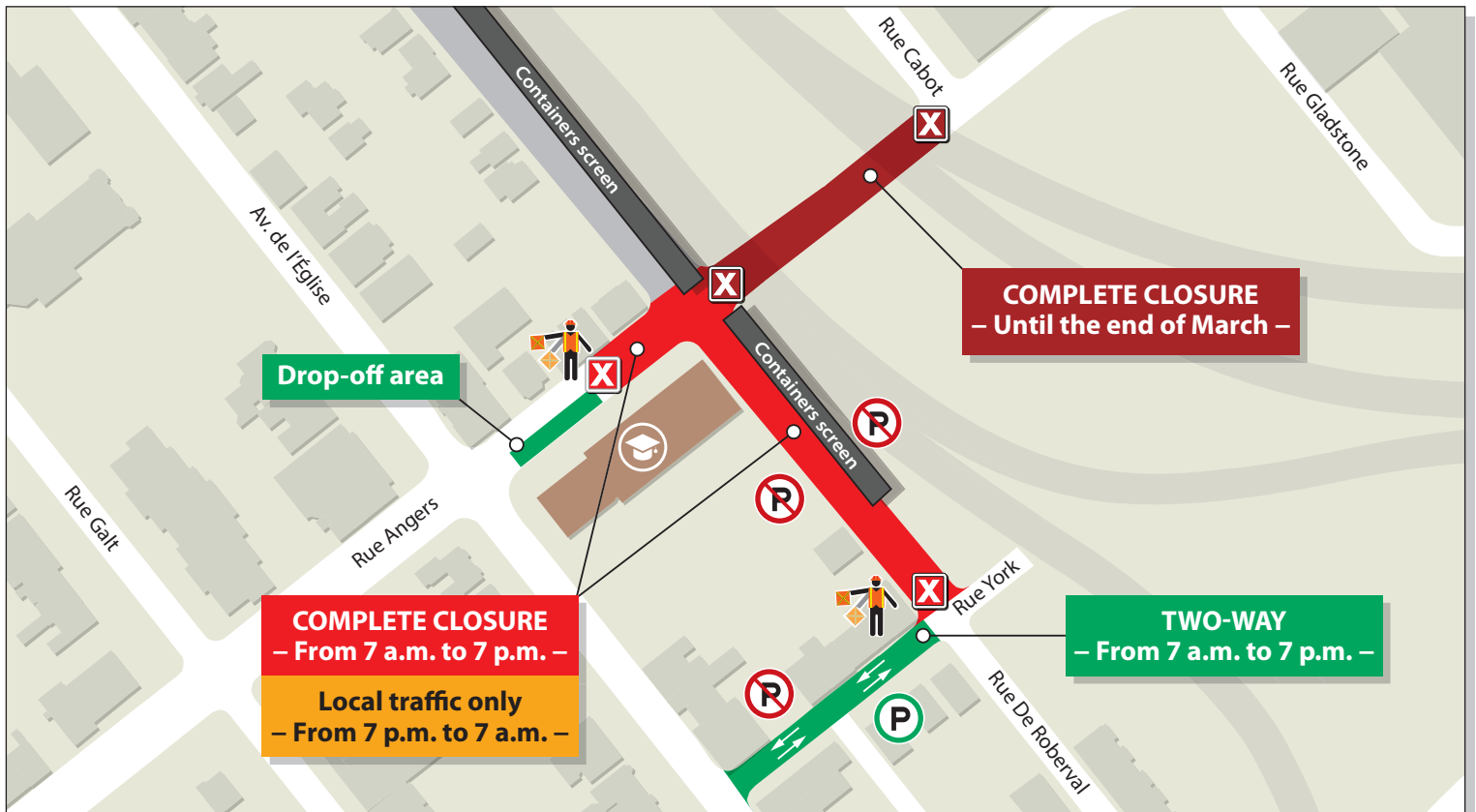


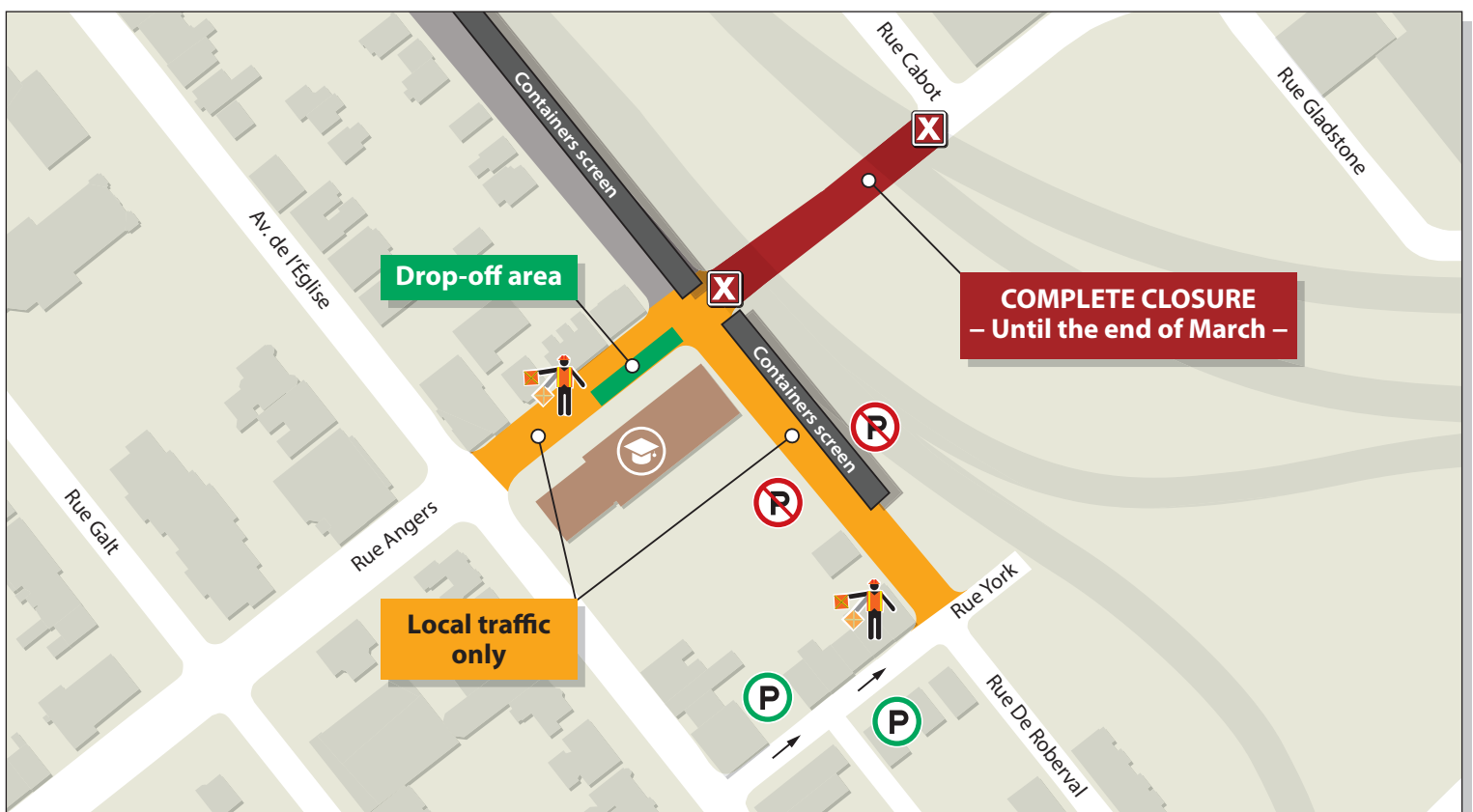
## ATTENTION : CLOSURES IN YOUR AREA

The ministère des Transports wishes to inform you that various configurations will be put in place in your area in the coming days to continue dismantling operations.

### From February 27 to March 1<sup>st</sup>



### From March 1<sup>st</sup> (in the evening) to the end of March



For more information:

- 514 873-1372

- [turcot.commentaires@transports.gouv.qc.ca](mailto:turcot.commentaires@transports.gouv.qc.ca)

-  @MTQ\_Turcot

- [www.turcot.gouv.qc.ca](http://www.turcot.gouv.qc.ca)